

A close-up photograph of a person's face, focusing on the eye area. A hand with light-colored, manicured nails is holding a gold-colored metal tool, which appears to be a facial roller or a similar device, against the skin around the eye. The person's eye is closed, and their skin is smooth and fair. The background is a soft, out-of-focus skin tone.

# EMPORE

Cold and heat therapy

SKIN IS ALL ABOUT TEMPERATURE



NOVEL SKINCARE FOR THE EYE AREA

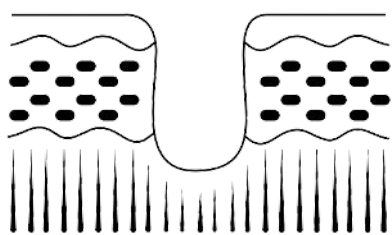




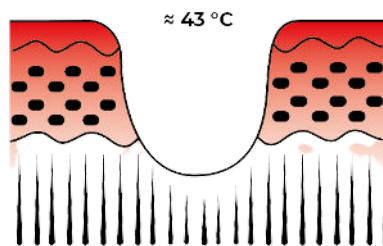
EMPORE



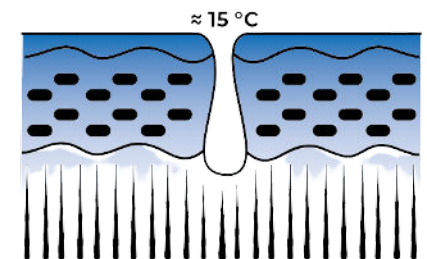
Simplified representation



Pores at Room temperature



Pores after the warm stones



Pores after the cold stones

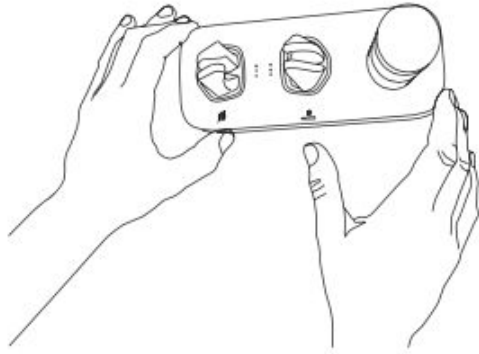
Heat is well known to increase the permeability of the skin, allowing a serum to better penetrate the skin. The sensitive skin in the periocular area achieves this maximum effect between 38 °C and 46 °C.

The local application of cold stones immediately reduces the temperature of the skin, which limits vascular dilation and regulates blood circulation to retain moisture and maintain a fresh, immediately radiant appearance. The sensitive skin in the periocular area achieves this maximum effect between 12 °C and 19 °C.

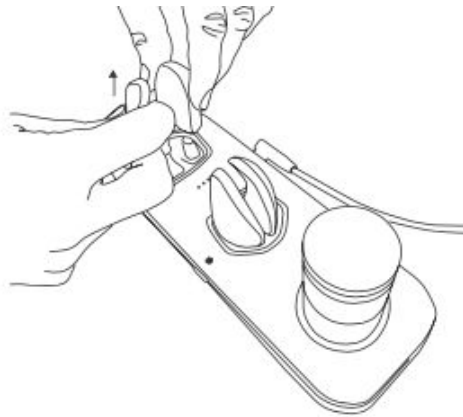


EMPORE

## PROCEDURE OF TREATMENT



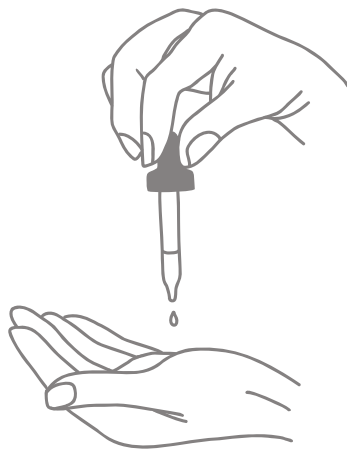
Activate the device and set the desired temperature.



After 100 seconds the warm stones are ready for use



The warm stones should be applied to the eye area for at least 30 seconds with a light application pressure (gentle massage).



Now apply the desired eye serum over the eye area.



The cold stones should be applied for at least 30 seconds with a light application pressure (gentle massage) on the eye area.





EMPORE





idCONSULTING<sup>+</sup>  
SWITZERLAND

[www.idconsult.ch](http://www.idconsult.ch)

idConsulting GmbH | Sihleggstrasse 23 | CH-8832 Wollerau | +41 76 245 08 88 | [info@idconsult.ch](mailto:info@idconsult.ch)