

A close-up photograph of a person's face, focusing on the eye area. A hand with light-colored manicured nails is holding a shiny, metallic, teardrop-shaped device against the skin around the eye. The device has a textured surface and a small circular opening. The person's eyes are closed, and their skin appears smooth and well-maintained. The background is a soft, out-of-focus skin tone.

EMPORE  
SKIN IS ALL ABOUT TEMPERATURE

INNOVATIVE THERMOELECTRIC CARE FOR THE EYE AREA





## GIVE YOUR APPEARANCE A NEW SHINE AND LET YOUR EYES GLOW

The EMPORE system uses thermoelectric energies such as cold and heat and works effectively against numerous diseases in the eye area. Empore can be used with or without moisturizer and is ready to use in seconds.

When applied with cream, the increased cell turnover of the skin ensures that the cream is absorbed only by the healthy skin cells and not for moisturizing dead skin cells. As a result, the moisturizer lasts longer and works better.

## THE EMPORE SYSTEM...

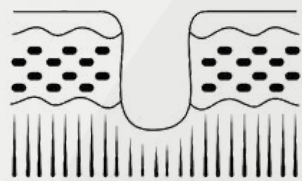
Stimulates the skin and promotes blood circulation  
Improves the natural cell turnover of the skin  
Optimizes the absorption of moisturizers  
Constricts blood vessels to reduce redness  
Smooths blotchy, uneven complexion  
Reduces dark circles caused by fatigue  
Controls puffiness from allergies or crying  
Reduces the appearance of open pores  
Firms skin and smooths wrinkles



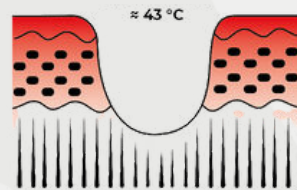
**EMPORE**  
IT'S ALL ABOUT TEMPERATURE



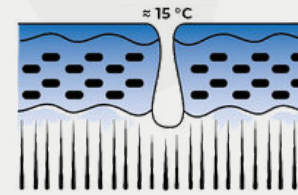
#### SIMPLIFIED REPRESENTATION



Pores at room temperature



Pores after the heat stones



Pores after the cold stones

Using the supplied stones, the permeability of the skin is increased in the course of the heat application, whereby active ingredients and serums can penetrate the skin much better. This leads to a more effective effect, the optimum of which is achieved at a core temperature between 38° and 46° Celsius.

During the cold application, the skin temperature in the treated eye area decreases extremely rapidly. This temperature change causes reduction of vasodilatation and regulation of blood circulation. The constellation leads to moisture retention in the treated area and helps the eye area look visibly more vibrant, radiant and fresh. The optimum can be achieved at a temperature between 12° and 19° Celsius.





YOU LOOK MARVELOUS



## MULTIPLE APPLICATIONS

The possibilities for treatments with the EMPORE system are versatile. A separate treatment for the eye area with an approximate duration of 20 minutes is recommended. However, the procedure can just as well be incorporated into an already elaborated plan for a facial treatment. Nothing stands in the way of the treating person's creativity.

For a result, multiple applications can be performed, thus setting the right measures against puffy eyes, bags under the eyes, the fine lines under the eyes and disturbing dark circles.



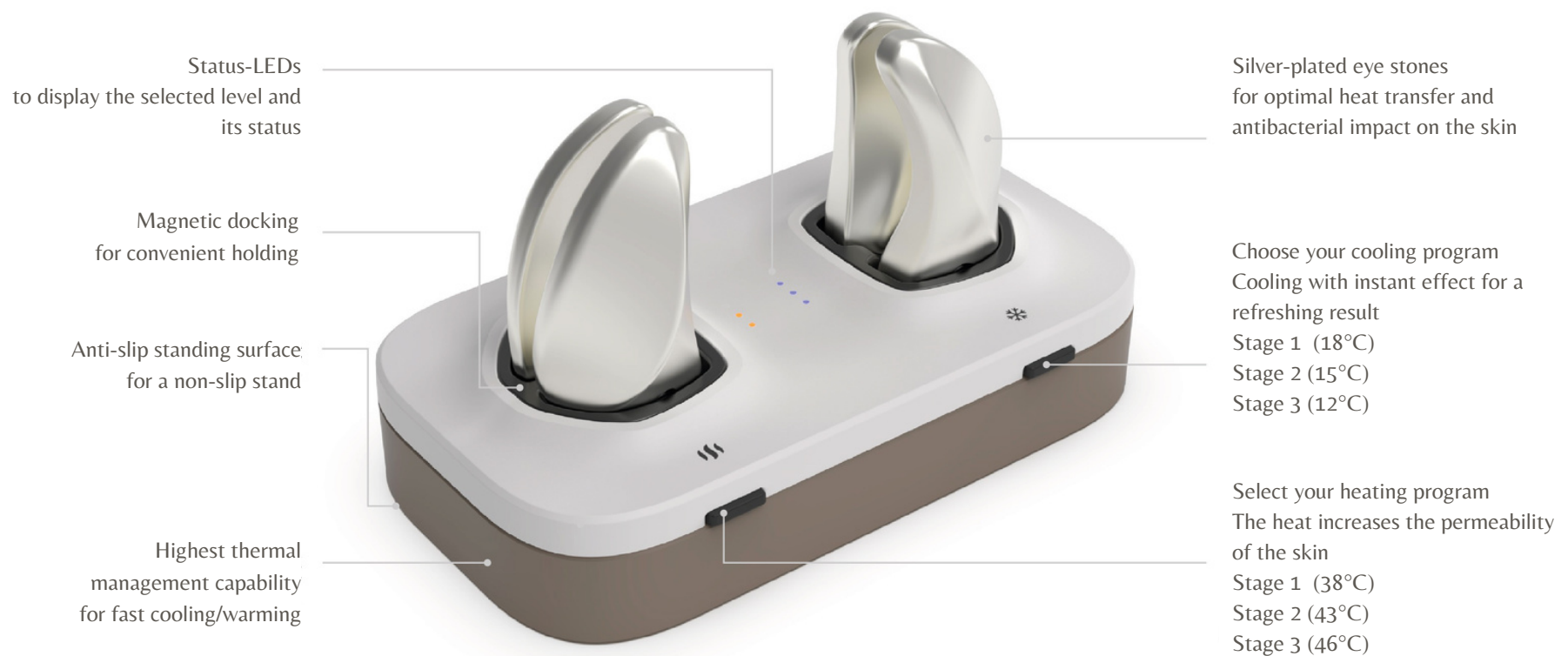
INDIVISUAL - JUST LIKE YOU





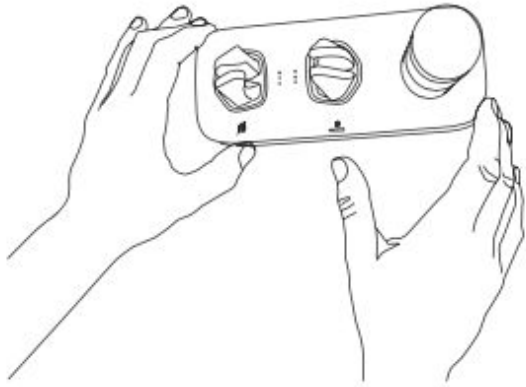
THE ULTIMATE CONTRAST TEMPERATURE SKINCARE



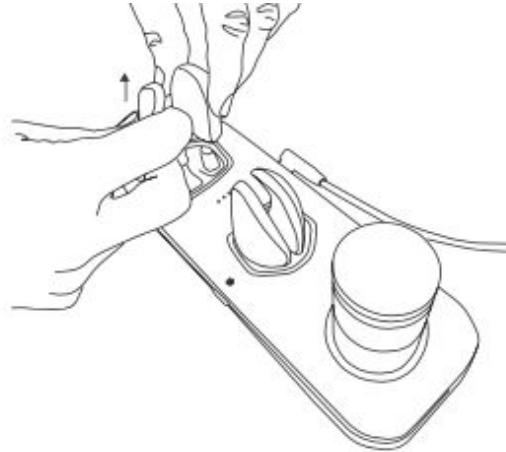




## PROCEDURE OF TREATMENT



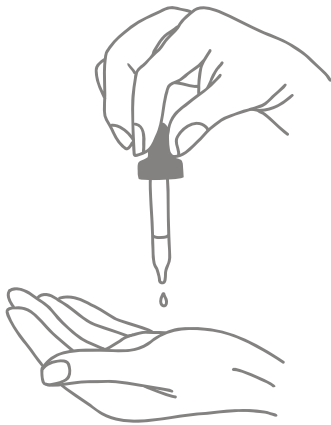
Activate the device and set the desired temperature.



After 100 seconds, the heated stones are ready for use.



The warm stones should be placed on the eye area with light pressure for at least 30 seconds (gentle massage).



Now apply the desired eye serum to the eye area.



The cold stones should be placed on the eye area with light pressure (gentle massage) for at least 30 seconds.





EMPORE  
IN A CLASS OF ITS OWN



## ARTICLES

### HEAT OPTIMIZES THE ABSORPTION OF CREAM AND SERUM

Park JH, Lee JW, Kim YC, Prausnitz MR. The effect of heat on skin permeability. *Int J Pharm.* 2008 Jul 9;359(1-2):94-103. doi: 10.1016/j.ijpharm.2008.03.032. Epub 2008 Mar 29. PMID: 18455889; PMCID: PMC2464624.

Szunerits S, Boukherroub R. Heat: A Highly Efficient Skin Enhancer for Transdermal Drug Delivery. *Front Bioeng Biotechnol.* 2018 Feb 15;6:15. doi: 10.3389/fbioe.2018.00015. PMID: 29497609; PMCID: PMC5818408.

Shahzad Y, Louw R, Gerber M, du Plessis J. Breaching the skin barrier through temperature modulations. *J Control Release.* 2015 Mar 28;202:1-13. doi: 10.1016/j.jconrel.2015.01.019. Epub 2015 Jan 20. PMID: 25616160.

Jung EC, Zhu H, Zou Y, Elmahdy A, Cao Y, Hui X, Maibach HI. Effect of ultrasound and heat on percutaneous absorption of l-ascorbic acid: human in vitro studies on Franz cell and Petri dish systems. *Int J Cosmet Sci.* 2016 Dec;38(6):646-650. doi: 10.1111/ics.12350. Epub 2016 Jul 28. PMID: 27380114.





idCONSULTING<sup>+</sup>  
S W I T Z E R L A N D

[WWW.IDCONSULT.CH](http://WWW.IDCONSULT.CH)

*Your Laser & Medical Experts*

idConsulting GmbH | Sihleggstrasse 23 | CH-8832 Wollerau | +41 76 245 08 88 | [info@idconsult.ch](mailto:info@idconsult.ch)